



perlberg
pfn festival of New Plays

JANUARY 17 – 19, 2025

PALM BEACH
pbd 25 YEARS
DRAMAWORKS

NOTE FROM RESIDENT PLAYWRIGHT



On behalf of Producing Artistic Director William Hayes, Managing Director Sue Ellen Beryl, Chief Financial & Operating Officer Rudina Toro, and the team at Palm Beach Dramaworks, it is my pleasure to welcome you to the 2025 Perlberg Festival of New Plays. Thanks to the support of Diane and Mark Perlberg, Sandra and Bernie Meyer, the Maurer Family Foundation, and YOU, our Dramaworks community, we are delighted to welcome these artists to our stage.

Let's be clear: this is a challenging time to be making new plays. Across the country, budgets for new play development are shrinking, funding for the arts is declining, and audiences have lots of competing demands on their attention. That said, we need new plays more than ever – to incite laughter, to invite reflection, to give us a collective space to ask important questions about who we are . . . and who we want to be. Tomorrow's classics are being written today, and festivals like this are where they're born.

We're thrilled to be gathering such a phenomenal team of playwrights, directors, and actors for this year's festival. We have exciting voices ready for their national spotlight, some of the most-produced playwrights in American theatre, and an incredible team of directors. This year's plays are funny, scary, suspenseful and — above all — timely. We hope you enjoy getting a peek at these plays now, because we have faith that they'll be on stages everywhere, and soon!

Jenny Connell Davis

Resident Playwright/Literary Manager

SPECIAL THANKS TO OUR SPONSORS

EXECUTIVE PRODUCERS

Diane and Mark Perlberg



SPECIAL THANKS TO OUR SPONSORS

ASSOCIATE PRODUCERS

Sandra and Bernie Meyer



SPONSORED IN PART BY

The Maurer Family Foundation
and
The Palm Beach Post

FRIDAY, JANUARY 17 AT 3PM

VINELAND PLACE

by Steven Dietz

Director: Mark Perlberg

Stage Directions: Gary Cadwallader*

For young writer Henry Sanders, it seemed like the perfect job: finishing the long-awaited final book of the novelist who was his hero. Hired by the novelist's widow, Henry finds himself instead in the midst of a rapidly developing mystery. *Vineland Place* is an intimate thriller, filled with dangerous surprises to the final page.

Victoria: Laura Turnbull*

Henry: Daniel Kublick*

FRIDAY, JANUARY 17 AT 7:30PM

CLASS C

by Chaz T. Martin

Director: Jessica Holt^

Stage Directions: Bruce Linser*

In a future where American citizens have government-assigned classifications, identity politics and old party lines are set to ensnare a Homeland Security agent on the run. Set off the grid in the northern woods, *Class C* reimagines who can (or should) be trusted in a world built on blind loyalty.

Allie: Lindsey Corey*

Agent Bliss: Michael Shenefelt*

Hen: Sandi Stock

Warren: Eli Lynn

SATURDAY, JANUARY 18 AT 3PM

THE MALLARD

by Vincent Delaney

Director: J. Barry Lewis[^]

Stage Directions: James Cichewicz

Freya and Gillian are teachers who have offended their school board and lost their jobs. Davis and Reagan are yard sale fanatics in search of a priceless antique duck decoy. What follows is a fierce, funny, and escalating battle over a symbol that has wildly different meanings – intersecting the couples in a journey that far surpasses the quest for treasure.

Freya: Ann Marie Cusson*

Gillian: Beth Dimon*

Davis: Timothy Mark Davis

Regan: Casey Sacco

Morley: Stephen Trovillion*

SATURDAY, JANUARY 18 AT 7:30PM

IN TWO

by Chelsea Marcantel

Director: Hannah Wolf[^]

Stage Directions: Daniel Kublick

Old and new magic converge in a decrepit vaudeville theatre, in this sharp exploration of stagecraft, second chances, and the art of cutting a woman in half.

Nova: Gracie Winchester*

Zamarand: Iain Batchelor*

Stella: Savannah Faye*

Richter: Ted de Chatelet*

SUNDAY, JANUARY 19 AT 3PM

ALBA

by Alejandro Rodriguez

Director: KJ Sanchez^

Stage Directions: Emma Garcia Seeger

Inspired by Federico García Lorca's *La Casa de Bernarda Alba*, *Alba* follows a strong-willed Cuban matriarch trying to hold onto control of her house in the face of myriad encroaching forces, including newfangled technology, impatient debtors, and a young suitor with suspicious motives. Narrated by her grandchild and set in working-class Miami, the play seeks to make sense of the unspoken secrets that led to a tragic family event.

Adela: Diana Garle*

Amelia: Mariana Mondragon*

Angustias: Gladys Ramirez*

Poet: Michael Ferriero

Gladys: Monica Quintero

Alba: Madelin Marchant

Yolanda: Barbara Bonilla*

Josefina: Adela Romero



* **Actors' Equity Association** (AEA) was founded in 1913 as the first of the American actor unions. Equity's mission is to advance, promote and foster the art of live theatre as an essential component of our society. Today, Equity represents more than 40,000 actors, singers, dancers and stage managers working in hundreds of theatres across the United States. Equity members are dedicated to working in the theatre as a profession, upholding the highest artistic standards.

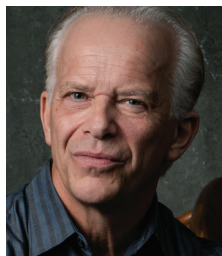
Equity negotiates wages and working conditions and provides a wide range of benefits including health and pension plans for its members. Through its agreement with Equity, this theatre has committed to the fair treatment of the actors and state managers employed in this production.

AEA is a member of the AFL-CIO and is affiliated with FIA, an international organization of performing arts unions. For more information, visit www.actorsequity.org.



^ The Director is a Member of the STAGE DIRECTORS AND CHOREOGRAPHERS SOCIETY, a national theatrical labor union.

THE PLAYWRIGHTS



STEVEN DIETZ For the 2024-25 season, Steven Dietz was once again named one of the “20 Most Produced Playwrights in America” by American Theatre magazine. His 40-plus plays and adaptations have been seen at over 100 regional theatres, as well as Off-Broadway and in 25 countries. Recent premieres include new adaptations of *Gaslight* by Patrick Hamilton and *Murder on the Links* by Agatha Christie. His widely-produced play, *Shooting Star*, was adapted by Dietz, Kirk Lynn, and Meg Ryan into the movie *What Happens Later*, starring Ms. Ryan. Awards include the Steinberg New Play Citation for *Bloomsday*, the Kennedy Center New American Plays Award for *Fiction*, and the Edgar Award® for Best Mystery Play for *Sherlock Holmes: The Final Adventure*.



CHAZ T. MARTIN is a Philadelphia-based, first-generation, mixed-race, nonbinary playwright. A graduate of NYU-Tisch, they’re a proud member of The Foundry, recent writer-in-residence at the audio app Dipsea, and literary manager at Philadelphia’s InterAct Theatre Company. Their short film, *Chemistry*, has won myriad writing awards at film festivals across the country. Their short screenplay, *Melissa*, was a finalist in Tribeca Film Institute’s Through Her Lens program in 2019, and is currently in development as the full-length play *I’ll Eat You Whole*.



VINCENT DELANEY is a Seattle-based playwright and screenwriter. His plays have been produced, commissioned, and developed at the Guthrie Theater, Florida Studio Theatre, Humana Festival, Premiere Stages, LAByrinth Theater Company, New Harmony Project, Alabama Shakespeare Festival, NNPN, InterAct, Children’s Theatre Company, ACT Theatre, Seattle Children’s Theatre, Magic Theatre, Woolly Mammoth, Shakespeare & Company, Pittsburgh Public Theater, B Street Theatre,

PlayLabs, Capital Repertory Theatre, and Orlando Shakes, among many others. Two of his features are currently in pre-production. Awards include McKnight and Bush Foundation Fellowships, the Reva Shiner Comedy Award from the Bloomington Playwrights Project, a Steinberg/ATCA nomination, and a Jerome Commission.



CHELSEA MARCANTEL is an LA-based writer, director, and collaborator. Reared by Cajuns in Louisiana, Chelsea has also lived and worked among the people of the Midwest, Appalachia, and the Mid-Atlantic. She completed an American Playwrights Fellowship at Juilliard, and is the recipient of the Richard Rodgers Award for Musical Theatre. Her plays, which have been produced worldwide, include *Airness*, *The Upstairs Department*, *Everything is Wonderful*, *Tiny Houses*, and *Citizen Detective*. Chelsea is an enthusiastic member of the Writers Guild of America and The Dramatists Guild, and runs with the activist collective The Kilroys. chelseamarcantel.com



ALEJANDRO RODRIGUEZ is a Miami-based Cuban-American theatre artist and graduate of Juilliard. His dance-theatre work, *Sorry*, enjoyed two sold-out runs at the LaGuardia Performing Arts Center in New York. *In My Body*, a collaboration with the Canadian street dance company, Bboyizm, recently toured North and South America and won four Dora Awards, including Outstanding Production. He's an O'Neill Center finalist and a Core Writer at the Playwrights Center. Residencies include Mesa Refuge, Artist in Residence in the Everglades (AIRIE), Miami Light Project, SPACE on Ryder Farm, Makehouse, and the Center for Innovation in the Arts at Juilliard. Formerly, Alejandro served as the associate artistic director for PlayMakers Repertory Company and as deputy executive director for Arts Ignite, a global nonprofit that delivers arts education to over 3000 children annually on four continents.

THE DIRECTORS



MARK PERLBERG has been on the board of PBD for more than 15 years and served as chairman for six years. He is the executive producer of the Perlberg Festival of New Plays, for which he last directed Oren Safdie's *Color Blind*, and was the executive producer of the Master Playwright series and Dramalogue: Talking Theatre! For those two series, he prepared

and delivered more than a dozen programs on playwrights including Henrik Ibsen, Anton Chekhov, and Tennessee Williams. He also directed the first play produced in the Studio Theatre. Mark is currently a managing director at Nautic Partners, a private equity firm with offices in Providence, RI and Palm Beach Gardens.



JESSICA HOLT (she/her) has developed and directed new and contemporary work at En Garde Arts, American Conservatory Theater (A.C.T.), Alliance Theatre, Berkeley Rep, Clarence Brown Theatre, The Cape Playhouse, Oklahoma City Repertory Theater, Magic Theatre, Cape Cod Theatre Project, Ensemble Studio Theatre, Virginia Stage Company, San Francisco

Playhouse, Santa Cruz Shakespeare, Rivendell Theatre, Bay Area Playwrights Festival, Sewanee Writers' Conference, Barrington Stage Company, among others. Currently: Director of the Summer Training Congress at A.C.T. MFA in directing, Yale School of Drama. jessicalholt.org



J. BARRY LEWIS The journey of creativity has always been front and center in the work of PBD. I have been honored to be on that journey with extraordinary artists, both on- and offstage. My work began with *No Exit* and brings me to *The Dresser*, with some 40 shows in between. Highlights include *Copenhagen*, *Jacques Brel...*, *The Chairs*, *Buried Child*, *All My Sons*, *Arcadia*,

Equus, *The Pitmen Painters*, *Death of a Salesman*, and so many others. Directing for the stage requires a great deal of trust; we artists open

our souls to examination of our most private beliefs in the theatrical process. It creates a bond of community. And when we find the trust, we hopefully find the truth in every story that we tell. We are “a band of creative brothers!”



HANNAH WOLF is an LA-based theatre director and producer originally from Juneau. She’s worked with Geffen Playhouse; B Street Theatre; La Jolla’s WOW Festival; Playwrights’ Center; and Perseverance, IAMA, Echo, The Fountain, and The Vineyard theatres, among many others. Recent shows include Paula Vogel’s *Indecent*, Jane Chambers’ *Last Summer at Bluefish*

Cove, Kirk Lynn’s *Fixing King John*, Katie Bender’s *Instructions for a Séance*, Chelsea Marcantel’s *Airness*, and *Fun Home*. Hannah is the senior artistic producer at the Ojai Playwrights Conference. She’s a National Directors Fellow (O’Neill, NNPN, SDC, Kennedy Center), a Fulbright Research Fellow (Bucharest), a member of the Directors Lab at Lincoln Center Theater, and Soho Rep’s Writer Director Lab. MFA from UT Austin and member of SDC. hannahjwolf.com



KJ SANCHEZ is the founder and CEO of American Records, dedicated to making theatre that chronicles our time. Sanchez has worked with playwrights such as Octavio Solis, Karen Zacarías, Quiara Alegría Hudes, Martin Zimmerman, and Kristoffer Diaz. Her productions have been seen at regional theatres throughout the country, including the Guthrie,

Hartford Stage, the Huntington, Alley Theatre, Berkeley Rep, Cincinnati Playhouse, Asolo Rep, and Round House; Off-Broadway at Urban Stages, HERE Arts Center, and the Gene Frankel Theatre. She is a former member of SITI Company, a Fox International Fellow at Yale University, a Douglass Wallop Fellow at Washington College, an associate artist with The Civilians, and a New York Theatre Workshop Usual Suspect.

Entertaining,
enlightening,
stimulating
discussion,
and
illuminating
our shared
humanity.

The Palm Beach Post
is proud to support





WILLIAM HAYES is the producing artistic director and a founding member of PBD. He has directed some 50 productions for the company; his credits run the gamut of playwrights from A (Edward Albee) to Z (Paul Zindel), and include William Inge, Eugène Ionesco, David Mamet, Eugene O'Neill, Tennessee Williams, and August Wilson. A short list of world premiere productions he's directed includes Jenny Connell Davis' *The Messenger*, Michael McKeever's *The People*

Downstairs, Joseph McDonough's *Ordinary Americans*, and Terry Teachout's *Billy and Me*. Bill is the recipient of numerous awards, including the Florida Professional Theatre Association's Richard G. Fallon Award for Excellence in Professional Theatre (2017), a Silver Palm Award presented by the South Florida Theatre League "for his outstanding work as Producing Artistic Director" of PBD (2014), and, with Sue Ellen Beryl, the REMY Pioneer Award presented by the South Florida Theatre League (2015). Bill served two terms as president of the Florida Professional Theatres Association, and is a national ambassador for the Entertainment Community Fund. He began his career as an actor, and was most recently seen in PBD's acclaimed productions of Ronald Harwood's *The Dresser*, Arthur Miller's *Death of a Salesman*, and Reginald Rose's *Twelve Angry Men*.



JENNY CONNELL DAVIS was named both resident playwright and literary manager in 2024. She was introduced to PBD audiences in 2020, when her play *As I See It* was included in the second annual New Year/New Plays Festival (now the Perlberg Festival of New Plays). She returned to the festival in 2023 with *The Messenger*, which subsequently had its world premiere at PBD during the 2023-24 season. Jenny is an affiliated artist with the Playwrights' Center in Minneapolis

and a member of The Gift Theatre in Chicago. Her plays have been developed or produced nationwide, including at the Eugene O'Neill Theater Center's National Playwrights Conference, Chance Theatre, ACT (Seattle), Rivendell Theatre Ensemble, Shrewd Productions, and Asolo Rep. As a screenwriter, Jenny has sold projects to Sony, Disney/Fox, Amazon, and Iconoclast/Anonymous Content. She has also served as in-house writer for the award-winning Baobab Studios, where she helped develop television, film, and book projects. In addition, she has been a finalist and semi-finalist for the Nicholl Fellowship, and her short films have screened worldwide, including at Toronto and SXSW. Jenny trained as an actor at Steppenwolf, and in playwriting at UT Austin.

Executive

Producing Artistic Director
Managing Director
Chief Financial & Operating Officer

William Hayes
Sue Ellen Beryl
Rudina Toro

Administrative

Business & HR Director
Director of Education & Community Engagement
Marketing Coordinator
Company Manager
House Manager
Box Office & Concessions Manager
Development Associate
Assistant Box Office Manager
Box Office Associates

Lara Garcia
Gary Cadwallader
Alessandra Lasanta
James Cichewicz
Mindy Martin
Mark Sullivan
Megan Gurtner
Cody Thurber
Desmond Lewis
Erica Negron
Alexa Rosenberger

Production

Production Manager/Resident Sound Designer
Technical Director
Assistant Technical Director/Lead Carpenter
Head of Properties/Shop Assistant
Audio Engineer/Technical Assistant
Costume Shop Manager/Resident Costume Designer
Wardrobe Supervisor and Wig Designer/Hair Stylist
Stage Crew Lead
Assistant Stage Manager

Roger Arnold
Doug Wilkinson
Kira Barnes
Jillian Feigenblat
Keshin Martin
Brian O'Keefe
Jane Lynch
Julia Howe
Anna-Teresa Soto-Andujar

Artists in Residence

Resident Director
Resident Playwright/Literary Manager
Resident Scenic Designer
Resident Lighting Designer
Resident Projection Designer
Resident Scenic Artist
Resident Stage Management

J. Barry Lewis
Jenny Connell Davis
Anne Mundell
Kirk Bookman
Adam J. Thompson
Rebecca Pancoast
Suzanne Clement Jones

Associates

Writer/Editor
Marketing Consultant
Poster Artwork
Graphic Designers

Sheryl Flatow
Jennifer Sardone-Shiner
Paul Gaschler
Jackie D'Onofrio
Jarrod Hogg

Palm Beach Dramaworks

CELEBRATING
25
YEARS

SATURDAY

MARCH **15** 2025

6:30 PM Cocktails

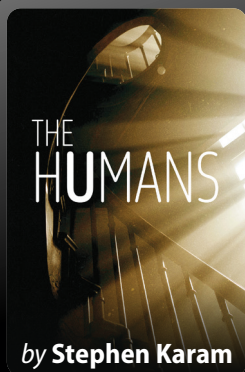
7:30 PM Dinner, Dancing, and Entertainment

The Cohen Pavilion at
The Raymond F. Kravis Center for the Performing Arts
701 Okeechobee Blvd., West Palm Beach, FL 33401

Valet Parking Available | Black Tie Optional

RSVP by March 1, 2025

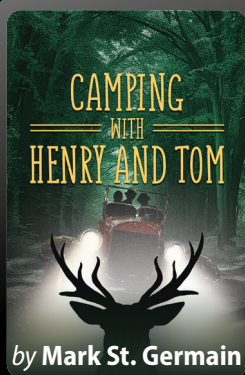




THE HUMANS

February 14 - March 2, 2025

“A family play that is sort of infected by my love of the thriller genre,” is how the playwright once described this Tony Award-winning comedy drama, in which the foibles, fears, and fragilities of an American family play out with great insight, humor, and compassion.



CAMPING WITH HENRY AND TOM

April 11 - 27, 2025

A work of fiction inspired by an actual 1921 camping trip taken by Warren G. Harding, Henry Ford, and Thomas Edison – three men with starkly different personalities and world views – the play deals with issues and ideas that remain as relevant today as they were 100 years ago.



DANGEROUS INSTRUMENTS

May 23 - June 8, 2025

Laura, a single mother, finds herself thrust into a gripping battle against a broken system when her son, Daniel, spirals into darkness. She must confront a parent’s deepest fears and sacrifice everything to rescue Daniel from the brink of becoming America’s next tragic headline.

EXECUTIVE PRODUCER: Penny Bank